

WCHRI Town Hall

February 8, 2023

10–11 a.m.

Sandy Davidge, Executive Director

Todd Alexander, Associate Director



Land acknowledgement



women & children's
health research institute

Objectives

- Accountability & transparency
- Scope of WCHRI support
- Create a sense of community

Agenda

- Governance and accountability
- Celebrating our members' research
- “Year” in review / highlights
- Building clinical trials / impact
- Evaluation
- EDI at WCHRI
- Trainee Advisory Committee
- Creating a WCHRI community
- Looking forward
- Discussion & questions

Why we exist

VISION:

**To harness the
power of research
innovation for a
healthy future for
children and
women**

MISSION:

**To foster the
brightest minds to
discover, innovate
and ultimately
transform the
health of children
and women
through
supporting
research
excellence**

How we add value

Support over 400 UofA-based researchers by:

- **F**acilitating
- **A**dvocating
- **C**ommunicating
- **T**raining
- **T**ranslating
- **S**ustaining



Children's health
and well-being



Lifelong
women's health



Pregnancy and
Developmental
Trajectories

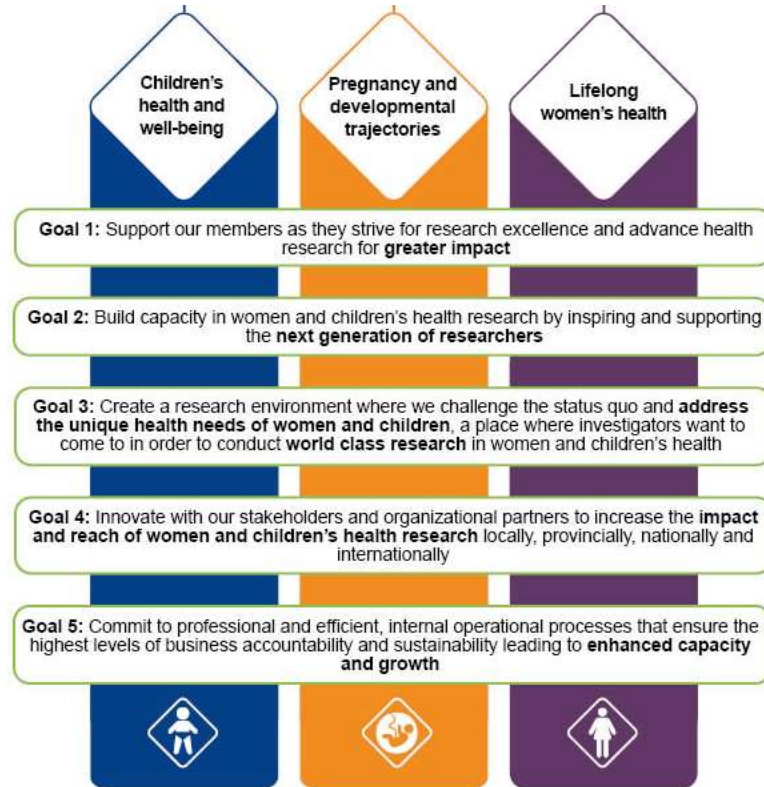
Governance



Formal accountability

- 4 Oversight Board meetings (including executive representation from the University of Alberta, Alberta Health Services, Stollery Children's Hospital Foundation and Royal Alexandra Hospital Foundation)
 - Finance and Operations Sub-Committee meetings
- Monthly PAC meetings
- Annual SAC meeting
- 16 meetings with foundation CEOs throughout the year

Strategic Roadmap





Strategic plan – budget relationship

Goal 1:
Our academic members

Goal 2:
Our in-training members

Grants

Innovation grant



Graduate Studentship



Catalysts

Recruitment



Events

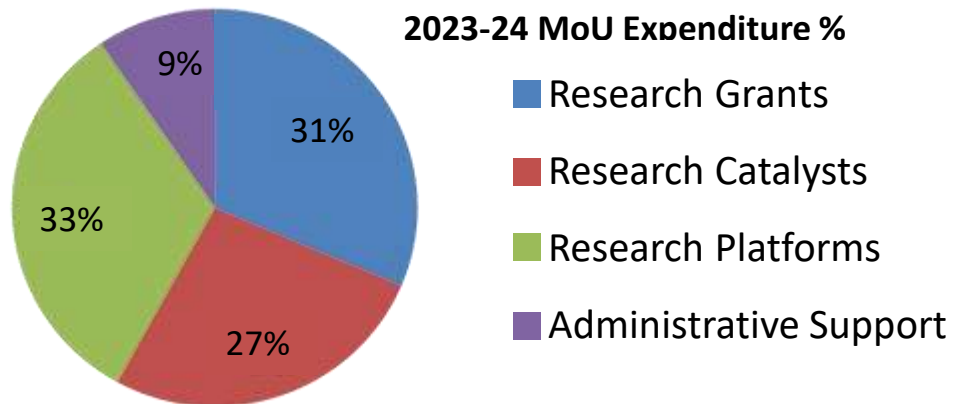
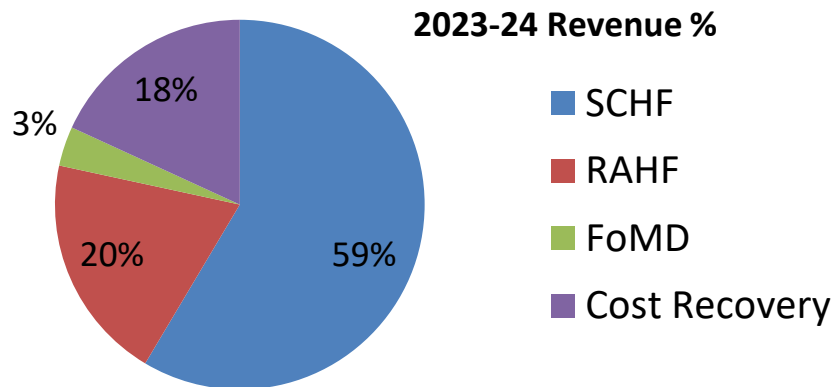


Platforms

Research Platforms



Revenue & Expenditure



SCHF: RAHF

Approximates ratio of children's health
researchers to women's health researchers

Reporting Research Investment Impact

- Demonstrate funds are invested with the highest standard of care
- Share the impact of donors philanthropy = stewardship
- Translate how investments = tangible outcomes

- Why acknowledge our funders?
- Required in our MoU
- Recognizes and thanks the Foundations' support
- Instills trust in your work—increasing likelihood of future support

How we use your reporting

WCHRI story

Home » Our impact » Stories

WCHRI Works

CURIOUS MINDS

WCHRI ANNUAL REPORT 2021-2022

Translating emergency knowledge for kids

A Foundation-supported initiative —
and its app — are bringing much-
needed support to rural physicians
and their patients.

[Read more](#)



NEWS POSTED ON NOV 30, 2022

Alexa Thompson Receives Prestigious Vanier Scholarship



We would like to extend our congratulations to Alexa Thompson, a Ph.D. student at the University of Alberta in the faculty of Laboratory Medicine and Pathology, on being awarded the prestigious Vanier Canada Graduate Scholarship for her work on improving...

Content highlighting the impact of Foundations' investment in your research

14 media mentions with our foundations + 3 WCHRI published stories
(September – November)



AWHF-supported Donna Vine
on the need for more clinician &
patient education & awareness
of how to treat PCOS

SCHF-supported Grant
Bruno shares the importance
need for Indigenous-led
approaches to reduce
inequities
in data and diagnosis.



Summer Studentship profiles



Julia Craig - Summer Studentship Award 2022



Christiane Bilodeau - Summer Studentship Award 2022

 <p>Jenae Gauthier Evaluation for improved early childhood practices, programs and policies</p>	 <p>Rita Jiang Use of a gluten-free food guide for children with celiac disease</p>
 <p>Emily Konrad Markers of lung injury in childhood pneumonia in low-resource settings</p>	 <p>Amanda Kryslar High-intensity interval training in youth who have received heart transplants</p>

<https://www.wchri.org/our-impact/summer-studentship-profiles/>

Scope of WCHRI Support Highlights from 2022

Goal 1: Our academic members

Supporting recruitment

- FoMD cohort hire partnerships to recruit:
 - Stem cell scientist and core stem cell facility for WCHRI researchers
 - Neuro-physiologist
- Pediatrics partnership to recruit:
 - Cell biologist and infectious disease clinician-scientist

Colleen Norris - Cavarzan Chair in Mature Women's Health Research

Competitive grant opportunities



Goal 2: Our in-training members

Super engaged Trainee Advisory Committee – more to come in next section of presentation

Planning for in-person Research Day – mark your calendars for October 18, 2023!

Lots of trainee funding programs – watch for program launches in our bulletin or through your department:

- Graduate studentship
- Summer studentship
- Postdoctoral fellowship
- Patient and Community Engaged Training Program (PaCET)
- Trainee research in pediatrics (TRIP)
- Resident/clinical fellow research
- Trainee outcomes presentation program (TOPP)

Lots of National Research Training Opportunities

ENRICH: perinatal and child health research

DIVERT: inclusive and accessible research to support child, youth, family mental health

CAMCCO-L: interdisciplinary training in perinatal research on medications

AVA: research to improve wellness of girls and women at risk or affected by violence and adversity

GROWW: intersectional approaches to learning about girls' and women's health

IMPACT Trials: perinatal and child clinical trials training

Want more
info?



Contact:
tanya.voth@
ualberta.ca

Looking for assistance with your research project? WCHRI's research platforms can help!

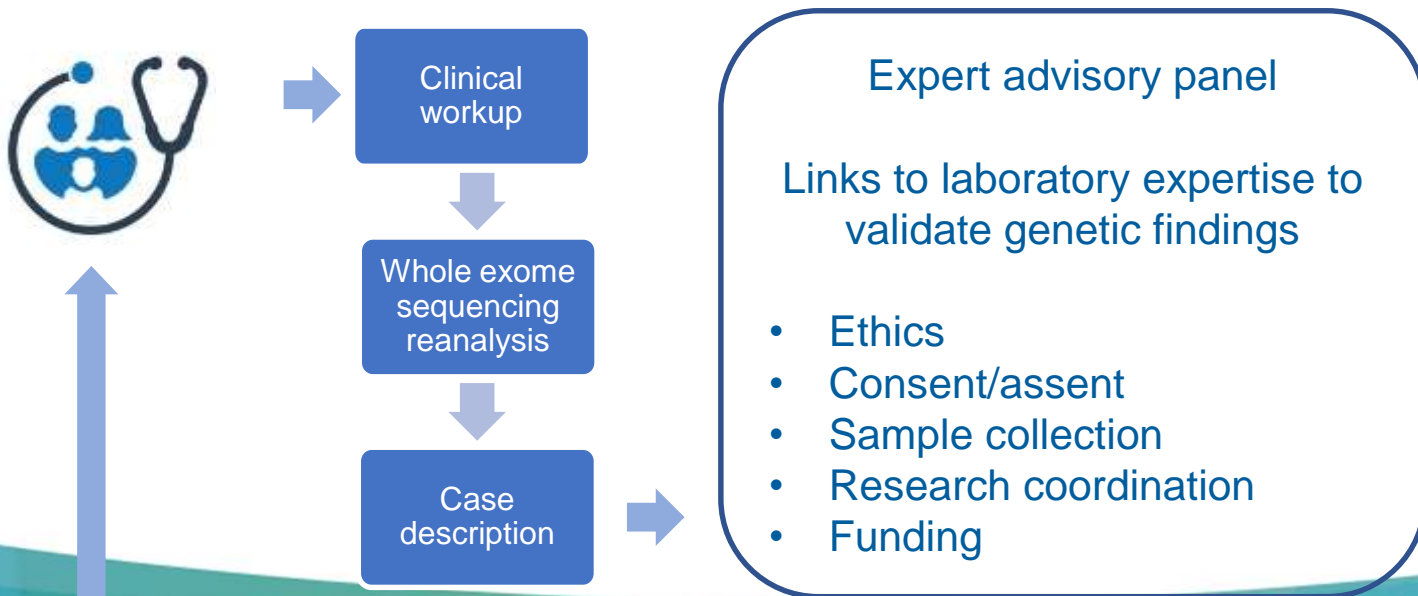
- Newly renamed Dale Sheard Centre for Solutions in Women's Health
- Qualitative research
- Knowledge Translation (KT) planning / Patient and community engagement
- Pediatric Clinical Trials Unit
- Data Coordinating Centre / REDCap
- Biostatistics
- Translational Genomics Hub

Supporting Clinical Research

- Provide access to treatment opportunities not otherwise available
- WCHRI has national connections in pediatric clinical research
- WCHRI's team of experienced coordinators offer cost-recovery support at almost any FTE
- Provide support / training of non-WCHRI coordinator staff in pediatrics
- Use two clinical investigation units (Stollery and UAH); one research center (LHHW)
- Pediatric Clinical Trials unit is currently supporting 173 active studies

Translational Genomics Hub

Facilitating translational research



Canada First Research Excellence Fund (CFREF) - *One Child, Every Child (institutional partnership)*

Partnership for Women's Health Research Canada (PWHR)

Maternal Infant Child and Youth Research Network (MICYRN)

- Pediatric Outcome Improvement through Coordination of Research Networks (POPCORN)
- Pediatric arm of the recently launched CIHR Canadian clinical trials consortium

Maternal Infant Child and Youth Research Network (MICYRN)

- Links 21 maternal-child research organizations
- Clinical trials infrastructure, rare diseases, and national coordination

Pediatric Outcome Improvement through Coordination of Research Networks (POPCORN)

- Current focus is COVID-19
- Will create infrastructure and capacity to ensure the child health research community is ready for the next public health emergency

Communications team received the highest honour in two categories at the 2022 IABC Edmonton Capital Awards

Committed WCHRI staff

- 12 staff of 10 years or longer
- 3 staff of 15 year or longer

Equity, Diversity and Inclusion at WCHRI



UofA frameworks

Areas of WCHRI focus and activity:

- Established a review framework to integrate EDI and SGBA+ into research proposals
- Conducted a trans health assessment
- Provided WCHRI staff learning sessions
- Launched webinar series with Intersections of Gender (Exploring expertise in Intersectional Health)
- Partnering on community-led Indigenous projects

Qualitative evaluation of WCHRI programs

Evaluation Purpose: To qualitatively understand what is most significant about WCHRI as an organization

1

WCHRI Staff
are Stewards
of Knowledge

2

The Value of
Relationships

3

What Enables
Relationships?



Trainee Advisory Committee



women & children's
health research institute



Alexa Thompson (chair)
Laboratory Medicine &
Pathology



Ehsan Misaghi (delegate
chair) Science



Fernando Rubio Atonal
Physiology



Marina Giovannoni
Obstetrics & Gynecology



Matthew Martens
Pediatrics



Brittany Mattenchuk
Kinesiology, Sport and
Recreation



Holly Mathias
School of Public Health



Robert McWeeny
Psychiatry



Mary Olukotun
Nursing



Vaishvi Patel
Obstetrics & Gynecology



Kaya Persad
Pediatrics



Taylor Sawchuk
Surgery



Keaton Tiernan
School of Public Health



Adrienne Watson
Medical Genetics



About WCHRI TAC

TAC= Trainee **A**dvisory **C**ommittee

Composed of students and fellows from all academic levels
(undergraduate, MSc, PhD, MD, post-doctoral fellows)

Representative of all three WCHRI research disciplines
(women, children, pregnancy) and pillars (biomedical,
clinical, health services, social/cultural population health)



WCHRI TAC Objectives

Provide feedback and suggestions to improve WCHRI programs and trainee engagement

Create programming opportunities for WCHRI trainee professional development and career building skills

Advise on and participate in WCHRI Research Day workshops, topics and format



WCHRI TAC Objectives

1. Mentorship Program

- Pairs WCHRI academic members (mentors) with WCHRI Graduate Students (mentees)

2. Trainee Spotlight Program

- Showcases WCHRI student's research accomplishments

3. Undergraduate Student Workshop Series

- Professional development skill workshops for WCHRI undergraduate students

TAC Trainee Spotlight



WCHRI summer studentship inspires a career in research

*Graduate student Devon Heath explains
how a summer research project affected
her career plans*

[Read more](#)



Building consensus on indicators of social and emotional well-being

*Graduate student focuses on relationships
to engage in research with Métis people
and communities*

[Read more](#)

Find these stories and more at
[www.wchri.org/our-impact/wchri-
stories/](http://www.wchri.org/our-impact/wchri-stories/)

Creating a WCHRI community



women & children's
health research institute

WCHRI Members

400+ Members in
14 Faculties across
3 Colleges

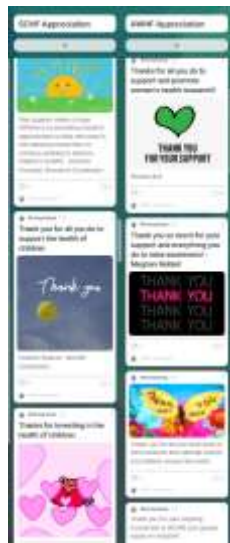


WCHRI members by the numbers

- ~430 members across 14 faculties
- In 2022 we welcomed 19 new members
- Since 2016, we have had ~83 assistant professors join WCHRI.
- Of the ~90 Canada Research Chairs at the U of A, 32 are WCHRI members
- Offered over 900 awards to trainees
- Collaborated with members, Foundations and FoMD leadership on development of WCHRI strategic plan



WCHRI Research Day 2022: bringing our community together!



- Total attendees: 384
- Abstracts presented: 153
- Academic member volunteers: 210

Dr. David Nicholas addressed the psychosocial and health service impacts of the COVID-19 pandemic on children with health challenges, now [on YouTube](#).

Engaging with donors

Virtual meet and greet donor events were hosted for each Foundation during WCHRI's annual Research Day.

WCHRI-supported researchers shared the impact of their health research at this exclusive event.

SCHF Meet and Greet Opportunity
November 2



Impressionable moments that ignite passion

Lab tours offer the opportunity for foundations and their donors to see **your** research in action!

Lisa Hornberger leading a research tour with participants from the Stollery Women's Network



Engaging with our Foundations events



Royal Alexandra
Hospital Foundation
Harvest Celebration
September 17

Member communications survey

A communications survey was sent to all WCHRI members in June 2022.

400 responded, a 90% response rate

Highlights include:

93% are willing to engage in at least one engagement activity (e.g. featured in a story, giving a lab tour to donors, etc.)

34% of WCHRI members use social media in their role as a researcher

73% of WCHRI members who use social media in their role as a researcher are willing to be social media ambassadors for WCHRI.



Dory Sample
Clinical Research



Maryna Yaskina
Biostatistics



Rick Watts
REDCap, Data
Management



Laura Reyes
Women's Health
Research



Bethan Kingsley
Qualitative, CBR, KT



Michelle Bailleux
Grants



Breanne Fisher & Yolanda Poffenroth
Communications and Stewardship



Louanne Campbell
Operations Director



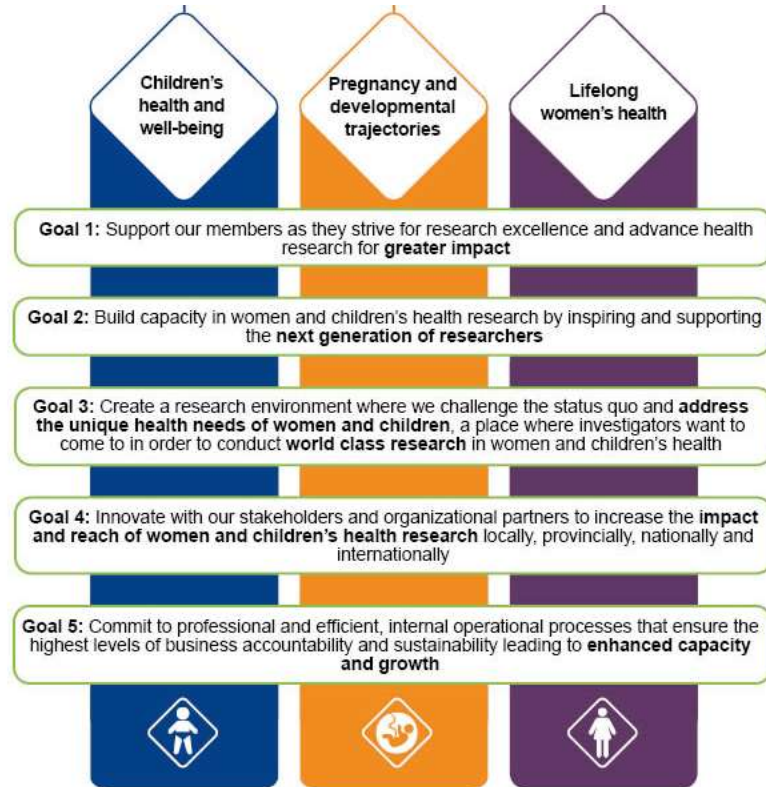
Tanya Voth
Program Director

Looking forward



women & children's
health research institute

Updating our strategic plan for 2023-2027



Memorandum of Understanding (MoU)

- Currently MoU runs until April 30, 2026
- Started planning for next one

New Stollery Hospital planning

- SCHF is advocating & fundraising for its own stand alone children's hospital
- WCHRI is working with the SCHF to ensure children's health research and WCHRI is embedded into the hospital planning at all stages
- Visit:
stollerytomorrowandtoday.com

stollery
Tomorrow  **Today**

Scientific Knowledge Exchange Program (SKEP)

- Just (re)launched!
- \$1000 available for active participation in academic member hosted visiting lectures; building collaboration; and networking
- Apply through our website

Thank you to the Foundations!



Stay connected

Send feedback / ideas

WCHRI@ualberta.ca

Receive updates from WCHRI

Weekly bulletin

Quarterly eNewsletter

Connect with WCHRI TAC

wchritac@ualberta.ca

Follow us @WCHRIUofA

